



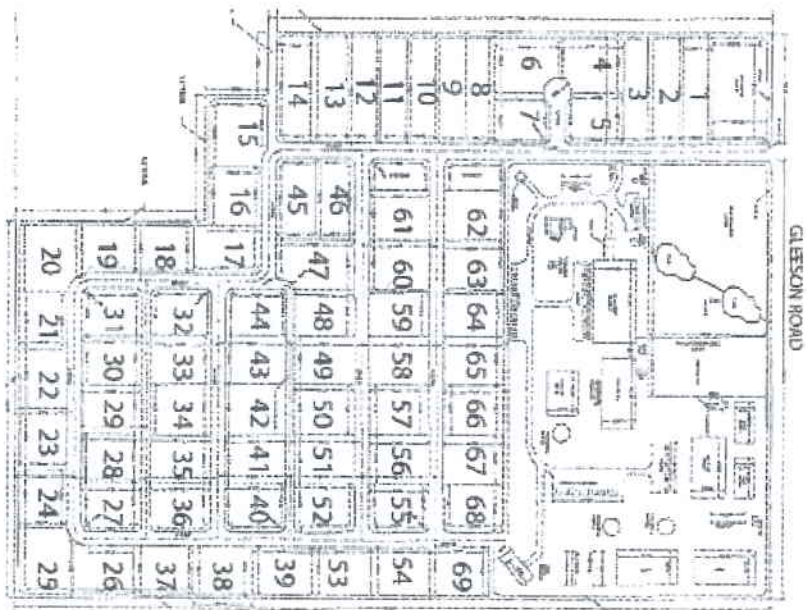
# ELFRIDA EQUESTRIAN PARK

LOCATED IN ELFRIDA, AZ ♦ GLEESON ROAD & HIGHWAY 191

## PROPOSED 110 ACRE MASTER PLAN

### TO INCLUDE:

- Covered Arena 300' x 150' – Seating for 150
- Open Arena 240' x 120' Including Cattle Pens & Seating for 100
- 2 Miles of Inside & Outside Trails and Tracks
- Open Grazing Pasture of 6 Acres Including 2 Ponds & Windmill
- Jumping and Workout Arena – 2 Acres
- 140+ Horse Stalls, Barns and Mare Motels
- Warm Up Arenas, 216' x 120' & 156' x 110'
- Round Pens (6) 60' Diameter
- Wash Racks – 3
- Business Office, Vet Office and Clubhouse
- Hay Barn and Workshop
- Bathrooms, Showers
- (69) 1 Acre Home sites Improved with 50' Roads to Each Site
- Parking for Horse Trailers and Events
- Commercial Site – 2 acres – Bed & Breakfast – Lodging of 12 Rooms



THIS IS A PROPOSED DEVELOPMENT LOCATED ON THE SOUTHEAST SECTION OF GLEESON ROAD AND HIGHWAY 191 IN ELFRIDA ARIZONA AND IS SUBJECT TO CHANGE AT ANY TIME.

